



Mitomo

since 1953

TRUE ND

ACCURATE TRANSMITTANCE
AND TRUE NEUTRALITY

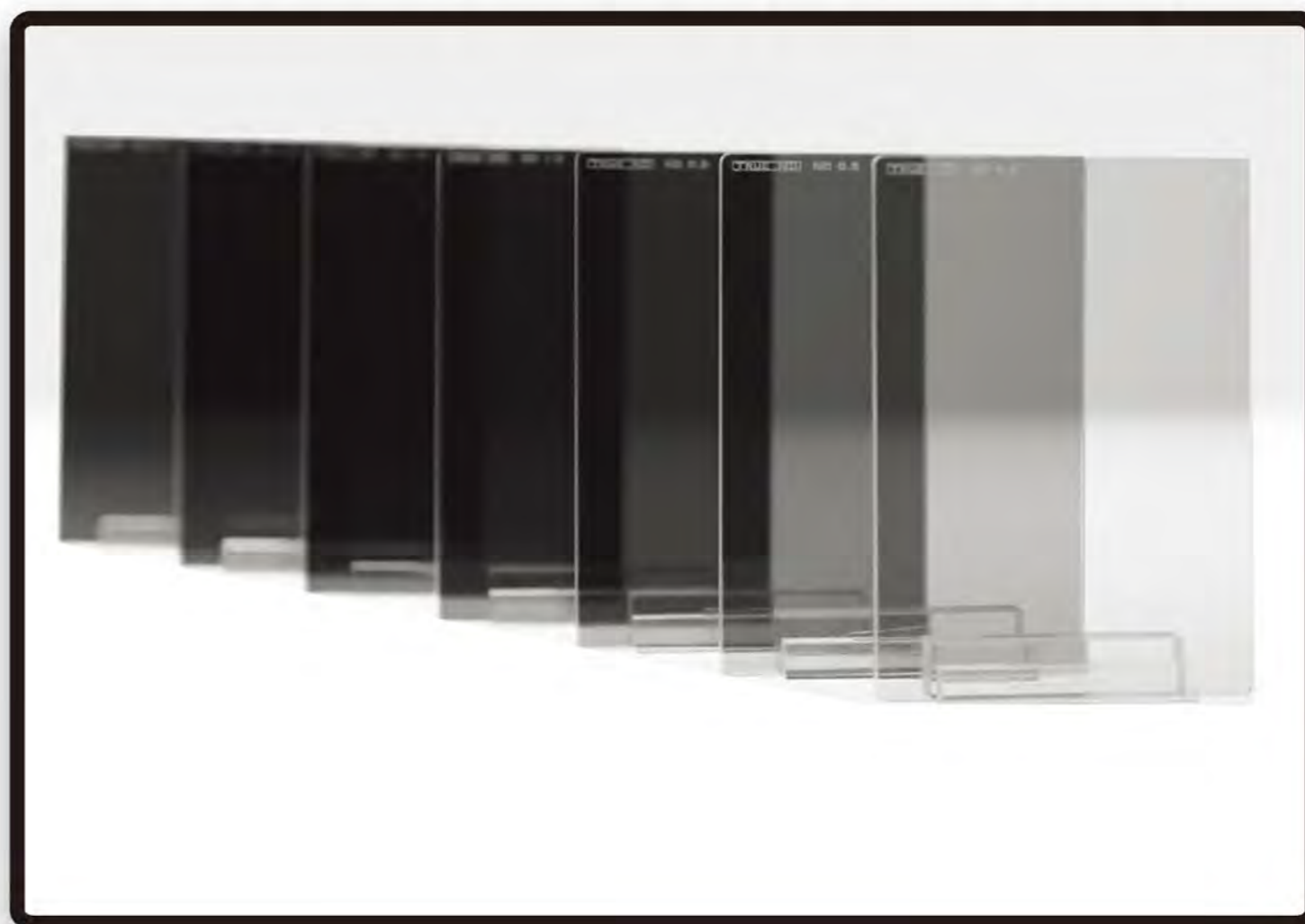
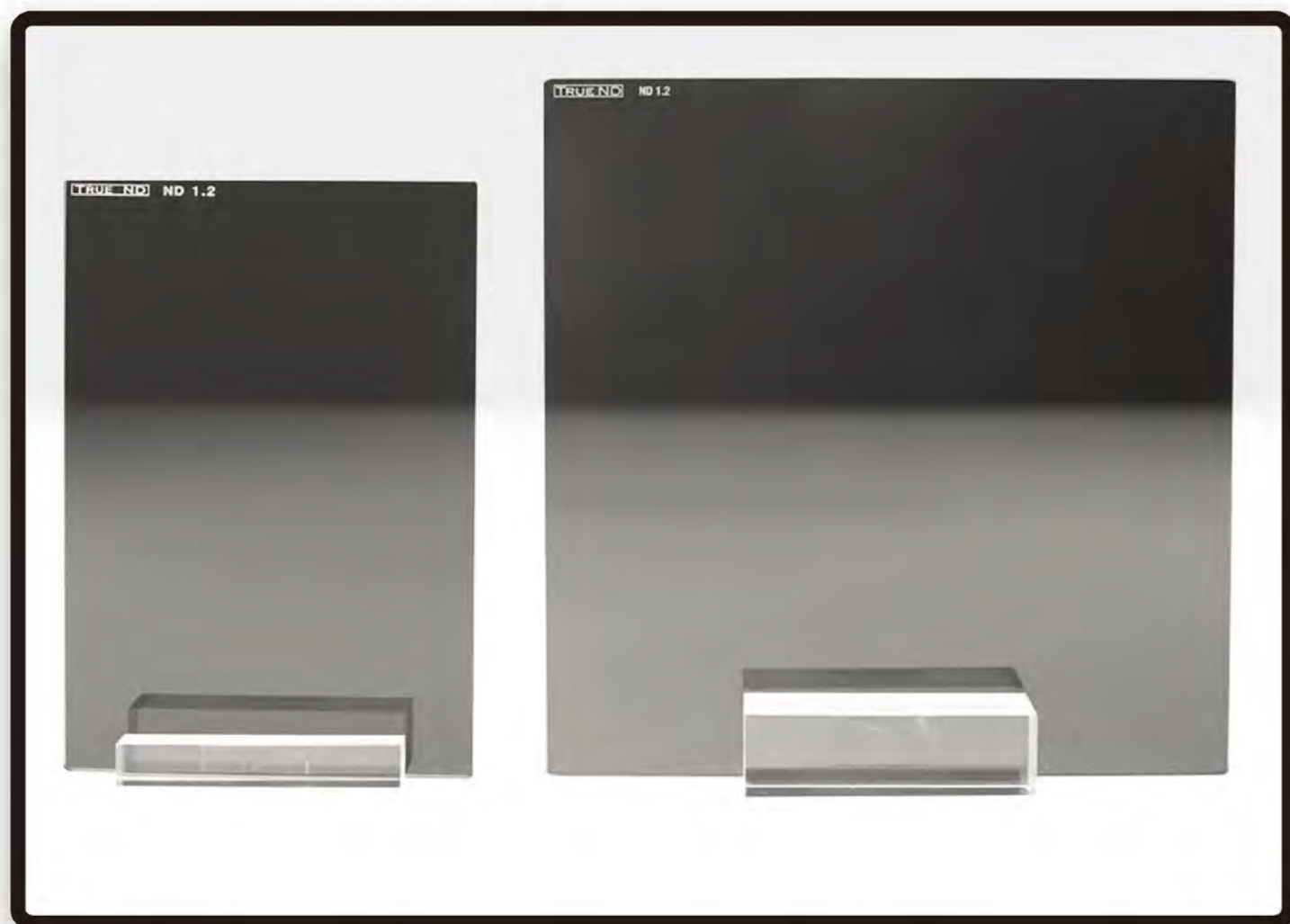
No color shift
No IR pollution
Improved glass
Scratch resistant
coated

TRUE ND is a clear glass coated with metallic alloy film on both sides. Manufactured under strict quality control, TRUE ND will offer you accurate transmittance and true neutrality. Troublesome infrared will also be filtered out by its flat spectral curve up to 750nm. TRUE ND is simply how ND filters are supposed to be.

Available in

Sizes: 4x5.65in / 6.6x6.6in

Densities: 0.3 / 0.6 / 0.9 / 1.2 / 1.5 / 1.8 / 2.1



NEW: Currently, only the 4x5.65 inch are now made from an improved glass and scratch resistant coated.

DESIGN
YOUR
PICTURE

TRUE ND chooses a simple recipe



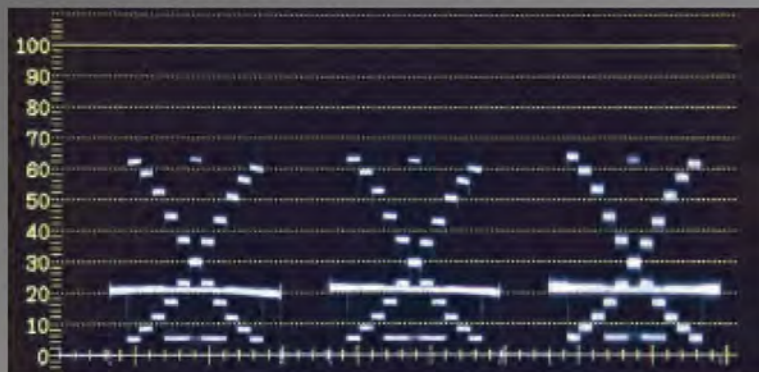
We do not use multilayered coats or combine multiple glasses. Strictly speaking, the light affects the picture even if it is a single layer coat. So we are pursuing "to dim the light and not to affect the color" as the essence of ND, We pursue the best quality with a simple recipe and offer products.

TRUE ND (ND1.2)

Vector Scope



Wave form (RGB)



Gray Scale



No Color Shift

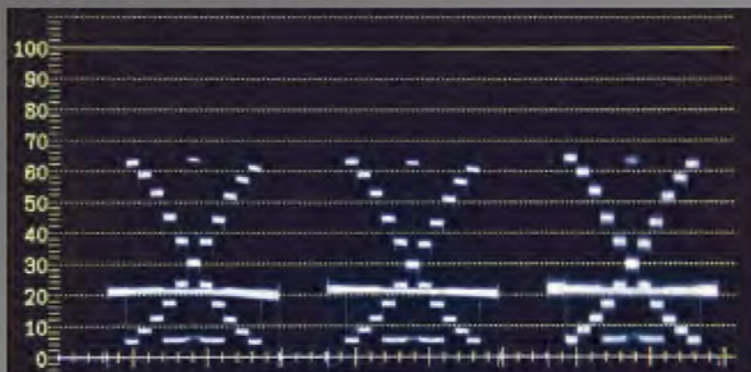


No ND

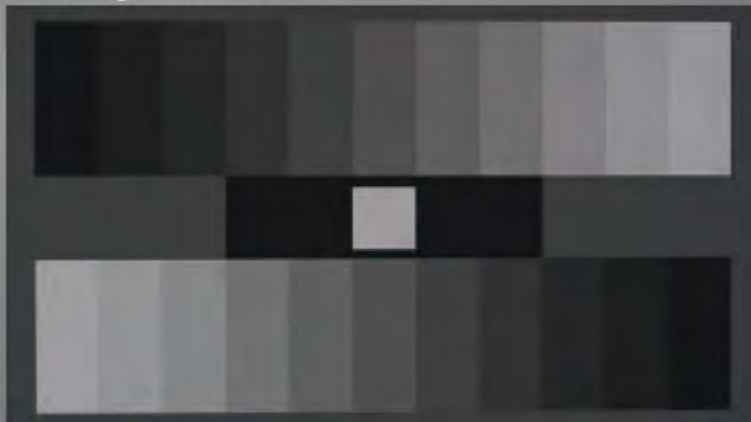
Vector Scope



Wave form (RGB)



Gray Scale

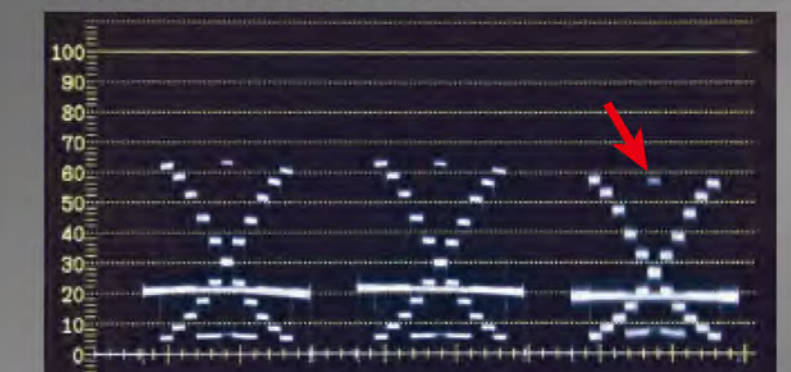


General IRND Filter (ND1.2)

Vector Scope



Wave form (RGB)



B channel drops

Gray Scale



Color Shifts To Yellow

